

PUMP COURT TAX CHAMBERS

Unparalleled Expertise

“PUMP COURT TAX CHAMBERS IS A SET RIGHT AT THE TOP OF ITS GAME, PRACTISING VARIED AND CHALLENGING WORK, PROMISING PHENOMENAL COMPENSATION, AND YET REMAINING SOMETHING OF A SECRET AMONG STUDENTS.”

CHAMBERS & PARTNERS STUDENT GUIDE

PUMP COURT
TAX CHAMBERS

Unparalleled Expertise

CHAMBERS OFFERS
UP TO TWO TWELVE
MONTH PUPILLAGES
WITH AWARDS OF
UP TO £50,000. UP
TO £12,000 MAY BE
DRAWN DOWN IN
THE BPTC YEAR.



Don't switch off!

There's no doubt that graduates interested in a career at the Bar will have certain pre-conceptions about the Tax Bar. Most of what you may have read or heard is probably far from accurate. There's no number crunching. But it's a cerebral field, offering the right candidate a stimulating career in a fast-moving world, much of which involves interaction with Magic Circle law firms, the Big 4 accountants and high profile clients.

We're the leaders in our field. We're the largest tax set by a considerable margin and we have been voted "Tax Set of the Year" by Chambers and Partners for the past five years.

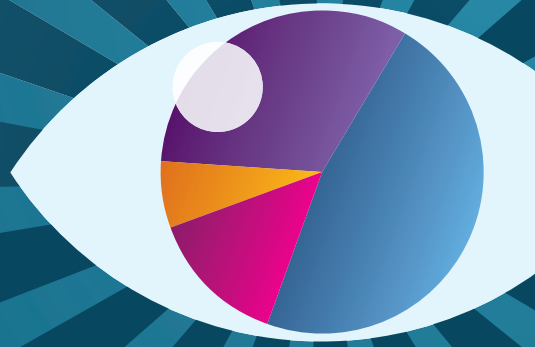
Pupillage and what to expect

During the first six months you'll have at least three pupil supervisors and will see most aspects of Chambers' work. You should expect to be sitting in on conferences with clients, attending the tax tribunals and appellate courts, and drafting pleadings and written advice. During your second six months you'll be working with a broader selection of Members of Chambers, including the Silks. The work will build on what you've done before but is likely to be more complex. By then you should have acquired the essentials of being a tax barrister and the expectations will be that much higher.

At regular intervals you'll also be pitched against fellow pupils or junior tenants in moots. The idea is to hone your written and oral advocacy skills.

We expect you to be fully integrated into Chambers on a day-by-day basis; so also expect to be invited to Chambers' social functions and to our wide ranging seminar programme, where you'll meet many of our regular clients.

Be prepared for hard work, testing assignments and feedback on your written work and advocacy. But above all, anticipate a pupillage in a well-run, commercially aware, Chambers.



YOU DON'T NEED
TO HAVE ALREADY
STUDIED TAX LAW
AS A SPECIALISM.
YOU DO NEED A
QUICK ANALYTICAL
MIND AND AN EYE
FOR DETAIL COMBINED
WITH A COMMERCIAL
AND PRACTICAL
OUTLOOK.

“...A TRADITION OF RECRUITING FROM THE BOTTOM UP WITH THE RESULT THAT ITS BARRISTERS HAVE BUILT UP A STRONG COLLECTIVE BOND.”

CHAMBERS DIRECTORY

Mini-Pupillage

We select approximately thirty people for mini-pupillages (of three days duration) each year.

Mini-pupillages are funded but are not formally assessed. Mini-pupils will sit with Members of Chambers and experience a broad range of work.

Applications are considered in batches during the course of the year. The deadlines for applications are 31st January, 30th April and 30th September each year.

Applications should be made to the Pupillage Secretary either by post or email (pupils@pumptax.com) including a full CV and covering letter indicating preferred dates.



AT PUMP COURT TAX
CHAMBERS WE ARE
COLLABORATIVE.
THE POOLING OF
KNOWLEDGE BY
LIKE-MINDED PEOPLE
ALLOWS OUR PUPILS
TO FLOURISH.

Starting your Tenancy

We aim to take on at least one new tenant each year. You're important to us; so we ensure you have a stimulating start to your career and give you plenty of opportunities to develop your own client base.

You'll be busy from the moment you gain tenancy. We aim to give you a mixture of your own client work and work with more senior barristers, adjusting the balance as your experience grows. We would hope that you'll be largely self-sufficient within two to four years of starting practice.

We appreciate that you may have accumulated significant debts in completing your education and training. To help you, there isn't any chambers rent for two years neither will you have to pay chambers contributions on your income for that period - irrespective of the level of your earnings.

You'll work as junior to the silks and other senior members in litigation so you can expect to be in court relatively regularly. There'll also be opportunities for you to conduct cases on your own.

There may be a period of secondment, usually to a law firm, of three to six months. This is invaluable experience and gives you a real chance to gain clients of your own at an early stage. All our current juniors have been seconded at some time or other.

After three years in practice you may wish to apply to the Attorney General's panel of counsel. If successful, you will undertake work for the Treasury, HMRC and SOCA (Serious Organised Crime Agency). This work is highly litigious – usually involving advocacy before the First Tier and Upper Tier Tax Tribunals and, in the case of SOCA, occasional trips to the High Court to obtain Freezing Injunctions.

Further details about both pupillages and mini-pupillages can be found in the Chambers' Pupillage Policy, downloadable from our website.

All enquiries relating to pupillages and mini-pupillages should, where possible, be made by e-mail to pupils@pumptax.com.

CONTACT

The Pupillage Secretary
Pump Court Tax Chambers
16 Bedford Row
London WC1R 4EF

Tel 020 7414 8080

Fax 020 7414 8099

DX 312 LDE

Email clerks@pumptax.com

www.pumptax.com